

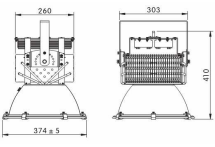


Lampa przemysłowa LED High Bay 200W

Zdjęcie	Opis			Wymiary (mm)	Pakowanie	Cena netto	
						3-10 szt	
 	Symbol:	RS-HB-FL 200W				1.Waga netto: 13Kg 2.Wymiary kartonu: 475*475*510mm	
	Moc:	200W, PF ≥ 0.95					
	Zasilanie:	85-265V					
	Strumień świetlny:	16000-18000lm					
	Ilość LED:	130 szt CREE XPE LED					
	CRI:	≥ 80					
	Kąt świecenia:	30°-60°					
	Klasa szczelności:	IP 65					
	Barwa bieli	biały ciepły 3000-3200k	biały dzienny 4000-4500k	Biały 6000-6500k			
	Żywotność użyteczna	50000h					
Gwarancja	3 lata						

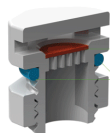


216° adjustable angle
 13 flexible positions makes project angle can be adjusted within 216°.



Copper heatpipe

By riveting the heatpipe to the fins, the heatpipe can conduct heat rapidly from chips bottom to the fins, greatly lower down the temperature of light source,



e-PTFE Breathable membrane
 Waterproof rubber ring

Respirator design

Waterproof design, eliminating mist, avoiding condensation, improving quality, extending the life span.



92% reflective rate

Reflector's beam angle 62%,
 Reflective rate could reach up to 92%.

